



Edge Protection



AFFIX





COMPANY PROFILE

AFFIX is one of the market leaders in Work-At-Height solutions and Access Systems since 2005. We are based out of **Qatar, UAE and India**. Our state of art, technologically advanced production facility is equipped with latest Robotic welding machines and production machinery. We have our own Innovation and R&D team set-up in Qatar

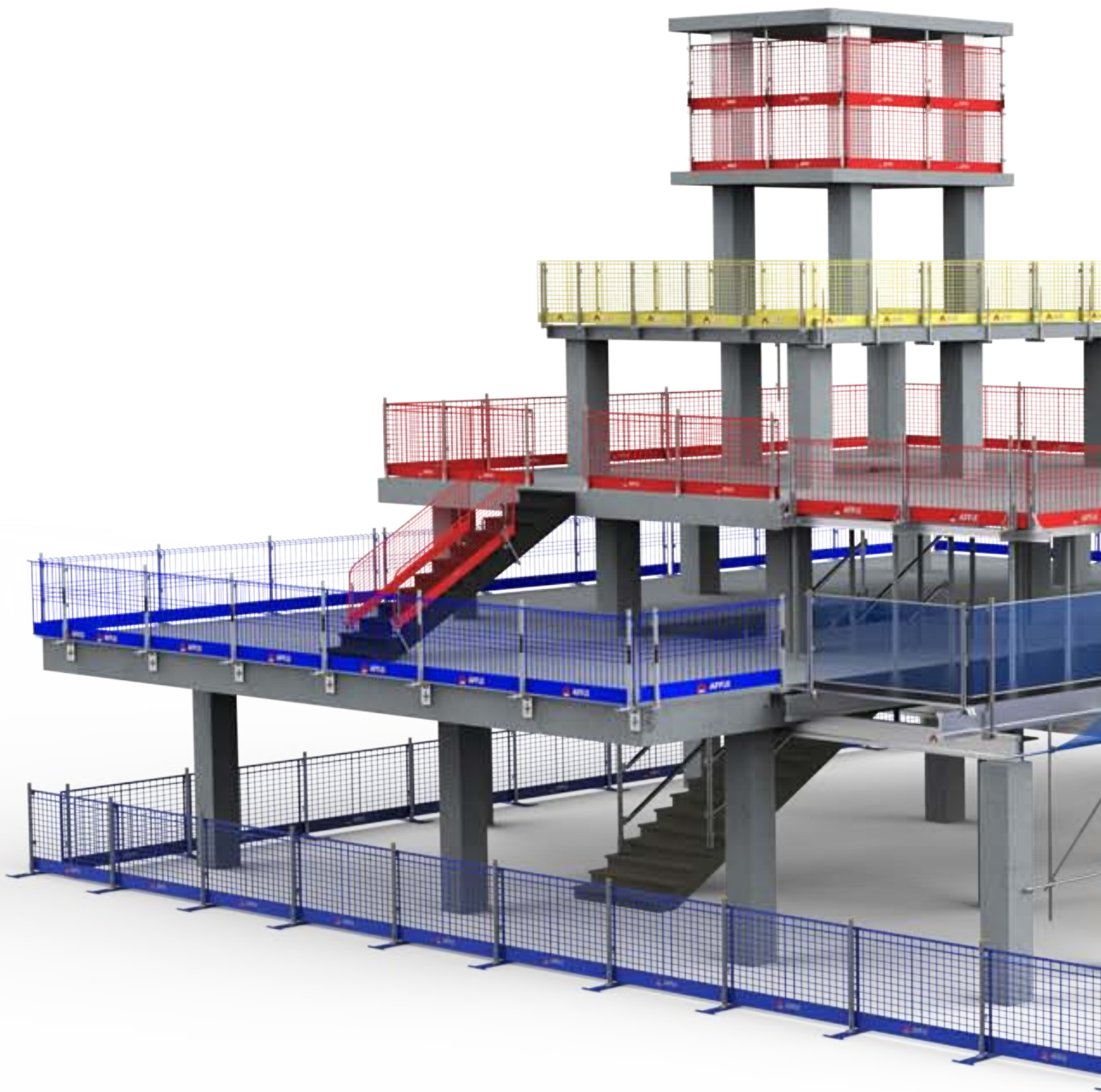
We are privileged to be a **Manufacturing Member of PASMA, UK** and also a **Manufacturing Member of The Ladder Association, UK**.

We are manufacturers and suppliers of various work at height solutions which are TUV certified and access systems like Aluminium and Steel Scaffoldings, Cuplock System, Shoring System, Fall Protection System, Ladders, Working Platforms, Bespoke products like Aviation, Rail and Commercial Vehicle's maintenance docks and platforms.

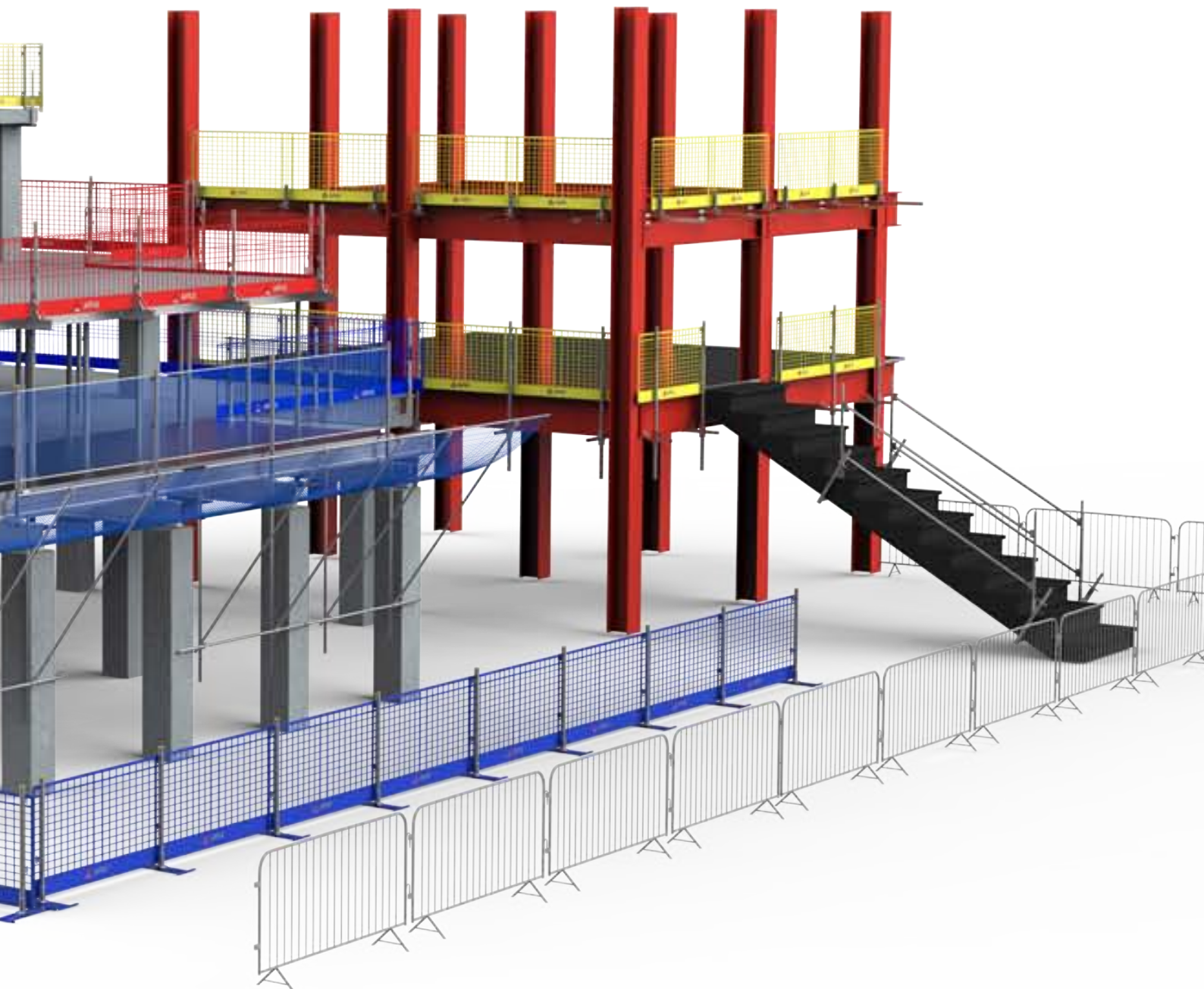
Safety is our prime concern.

All our products are **duly Certified by TUV** or other global Certification bodies for their required corresponding European/ International Standards.





Edge Protection System



Edge Protection System

Conforms to BS EN 13374

AFFIX Edge Protection system meets the **EN 13374** class A and class B standards. What's more, the components of different edge protection systems can be flexibly adapted, and this will significantly reduce your purchasing costs.

AFFIX Edge Protection is a system to prevent falls from heights and minimize the risk of injury. This system can be installed near the edges which acts as a physical barrier and prevents the risk of falling.

Open slab edges, staircases, skylight openings, construction openings, stairwells, balconies, working platforms, etc. are ideal places where the edge protection system can be utilized.

AFFIX Edge Protection System is categorized into the following products:

- **Concrete Edge Protection**

1. Bolt Down System
2. Slab Grab System
3. Edge Bracket System
4. Walkway Barrier System

- **Stair Edge Protection System**

- **Compression Post System**

- **Steel Structure Edge Protection**

- **Scaffold Edge Protection System**

- **Formwork Edge Protection**

- **Safety Net Fans**

- **Pedestrian Barrier**

Slab edges are present everywhere and are a usual cause of fall accidents. Edge protection can be installed on the slab or on the outside of the slab edge. If there are columns, they can be an alternative attachment of the edge protection.

Bolt Down System

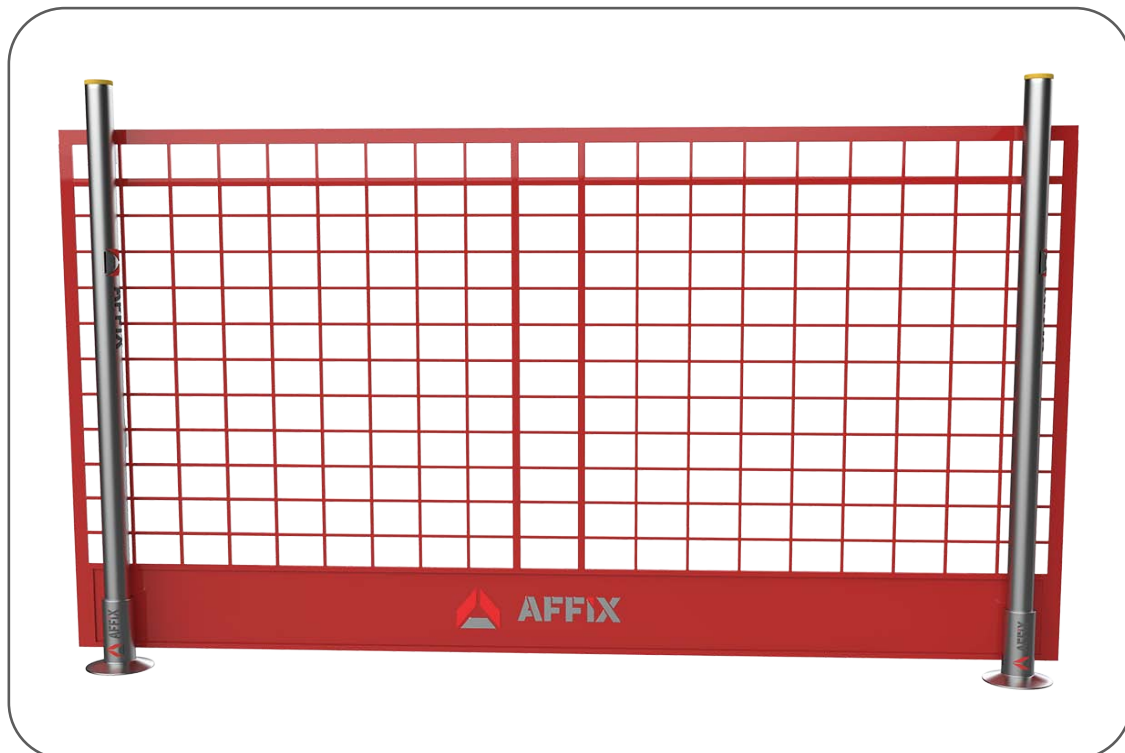
Model No. EPCEP01

AFFIX **Bolt Down Mesh Barrier Edge Protection** system comprises of a base with socket, a safety post and a mesh barrier. The socket base is anchored to an anchor which is fixed into the top of the slab by a double-threaded bolt

A tensile load of approximately 6kN is imposed on the anchor, and a shear load of at least 0.3kN is imposed on a 1m long post.

Bolt Down Edge Protection system comprises:

1. Socket base
2. Safety post of 1.2 Mtr
3. Mesh barrier of 1.3 Mtr / 2.6 Mtr.



Slab Grab System

Model No. EPCEP02

Slab Grab Barrier system comprises of a slab clamp, a safety post and a mesh barrier. The slab clamp can be clamped to the edge of the slab. This system eliminates the need of making holes in the slab. They can be clamped to a 100mm thick to 600mm thick slab. The slab clamp can be swivelled and hence it can be used both horizontally and vertically (slabs and upstands).

Slab Grab Barrier Edge Protection system comprises:

1. Slab clamp
2. Safety post of 1.2 Mtr
3. Mesh barrier of 1.3 Mtr / 2.6 Mtr.



Edge Bracket System

Model No. EPCEP03

The AFFIX Edge Bracket offers this system which can be attached to any suitable vertical surface. This could be a slab edge, timer cassette edge or pre-cast stair stringer. This system is ideal for erecting barrier systems on precast concrete slab edges. Edge bracket units can be used over the slab or fixed away from the slab edge for internal brickwork concourse levels. This system has the option to position the Post 100mm off the face, providing access for edge finishing to be completed safely. The system is fitted using a single fixing, the edge bracket remains stable by spiking the concrete when tightened.

Edge bracket System comprises:

1. Edge bracket
2. Safety post 1.3 m with Spring Pin
3. Mesh barrier 1.3 m L, 2.6 m L



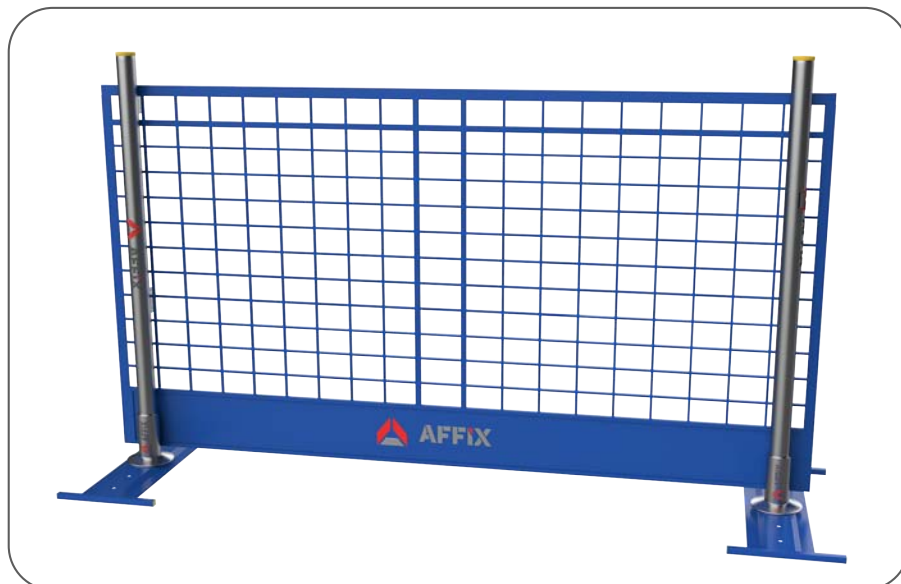
Walkway Barrier System

Model No. EPCEP04

The **AFFIX Counterweight Walkway Barrier System** is required for safe site walkways and demarcation zoned areas on construction site. This system offers durability and strength, great flexibility and the ability to be adapted to suit the most complex of site access areas.

Counterweight Walkway Barrier System comprises:

1. Counterweight Base Plate
2. Socket Base
3. Safety Post 1.2 m
4. Mesh barrier 1.3 m, 2.6 m



The **AFFIX Stair Edge Protection system** is a very versatile system which can be used on concrete, timber or steel staircases.

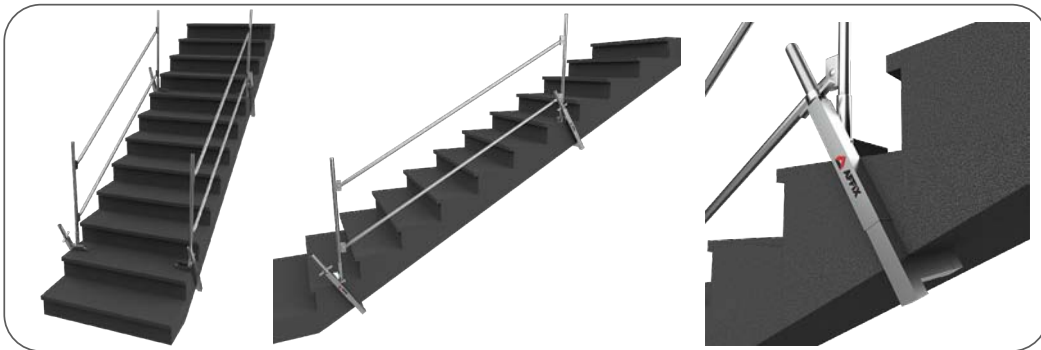
Handrail Type - Clamp Base

Model No. EPSEPS01

This is a revolutionary system for staircase edge protection which is time saving while installing and safe as well. The clamp is clamped over the staircase and posts and handrails attached later onto it.

Clamp type system comprises:

1. Stair Clamp
2. Safety Post 1.2 m
3. Handrail bar



Handrail Type - Socket Base

Model No. EPSEPS02

The socket base of the **AFFIX Socket Base Stairway Edge Protection** system is mounted to the top of the stair slab. The safety post is then fitted into the socket base and then the handrail bars are fitted to the safety posts.

The handrail bars are adjustable from 1.5m to 2.5m length, they can be easily adjusted as per site requirements.



Socket Base type system comprises:

1. Socket Base
2. Safety Post 1.2 m
3. Handrail bar

Mesh Barrier Type – Clamp Base

Model No. EPSEPS03

The **AFFIX Mesh Barrier Stair Edge Protection** components are made from high-quality steel to provide strong and secure fall protection for stairways. Compared to handrails type stair edge protection system, the mesh barrier type stair edge protection system provides a stronger protection system. It is safer for people using the staircases during the construction phase.

Note: This system can also be made available in Socket Base on special request

Clamp type system comprises:

1. Stair Clamp
2. Safety Post 1.2 m
3. Staircase Mesh Barrier



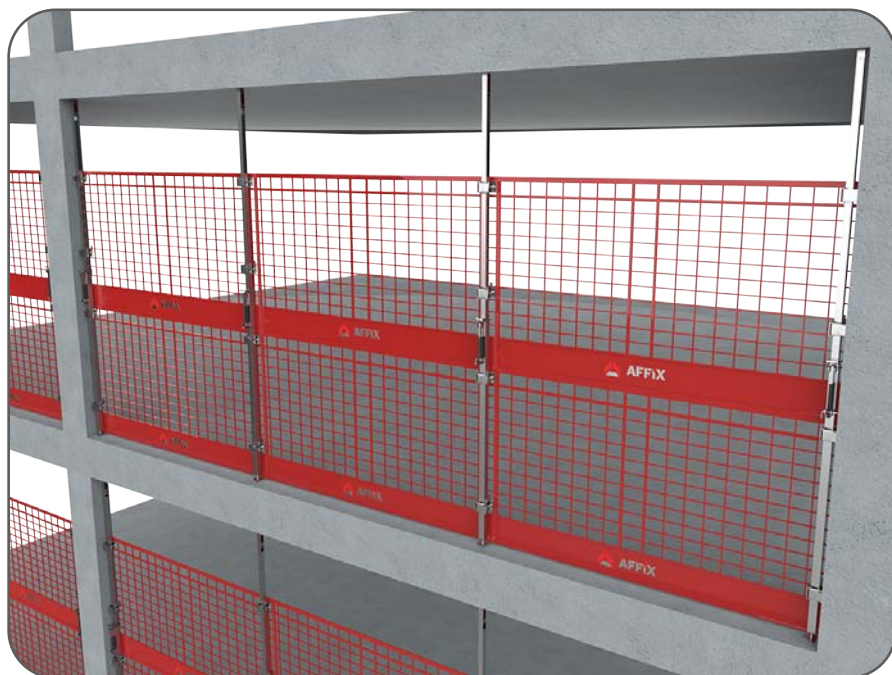
Model No. EPCEP03

The AFFIX Compression Post system is used in areas of high wind loading such as high-rise buildings. This system can be installed from floor to ceiling and mesh barriers clamped to the post. It can be easily installed by extending the inner tube to the ceiling and securing the temporary edge protection system and then activating the compression function using a screw adjustment. Using the compression posts in conjunction with mesh barriers allows for fully covered openings.

This system avoids the use of anchors and can be mechanically anchored between floor and slab/soffit and is easy, fast and safe.

Clamp type system comprises:

1. Compression Post
2. Mesh barrier Holder
3. Mesh barrier 1.3 m L, 2.6 m L
4. Slider Hook



The AFFIX Steel Structure Edge Protection system is ideal for steel structures where edge protection is required.

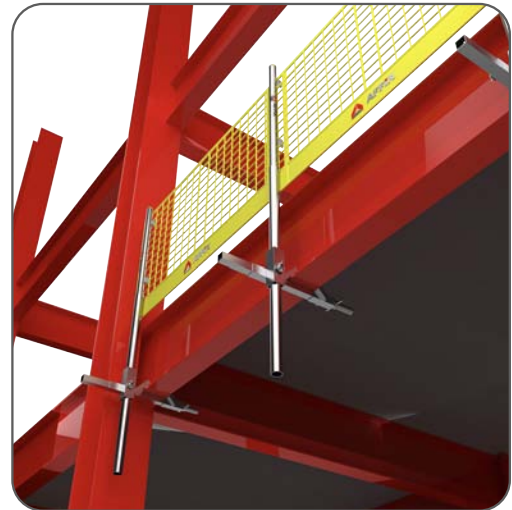
Clamp Type

Model No. EPSSEPS01

Using the **I-Beam clamp/ bracket** as a fixing component which can be easily clamped to the horizontal steel beams of the structure. It is very easy to set with an adjustable screw. The I-Beam clamp is horizontally & vertically adjustable, suiting steel beams to a flange width range of 100mm to 310mm and a maximum beam height of **990mm**.

Clamp type system comprises:

1. I-Beam Clamp/ Bracket
2. Safety Post 1.2 m
3. Mesh barrier 1.3 m, 2.6 m



Bolt and Slotted Type

Model No. EPSSEPS02

This system is bolted directly to the I-Beam web into pre-drilled holes. The system is horizontally & vertically adjustable using the slots and fits onto any I-Beam specification. It allows installation of steel framing systems without conflict with edge protection. Mesh barriers can be installed away from the steel structures, allowing for uninterrupted installation of metal decking and slabs. Use the slots to do the adjustment.

Bolt and Slotted type system comprises:

1. Slotted bracket with base plate
2. Safety Post 1.2 m
3. Mesh barrier 1.8 m, 2.6 m

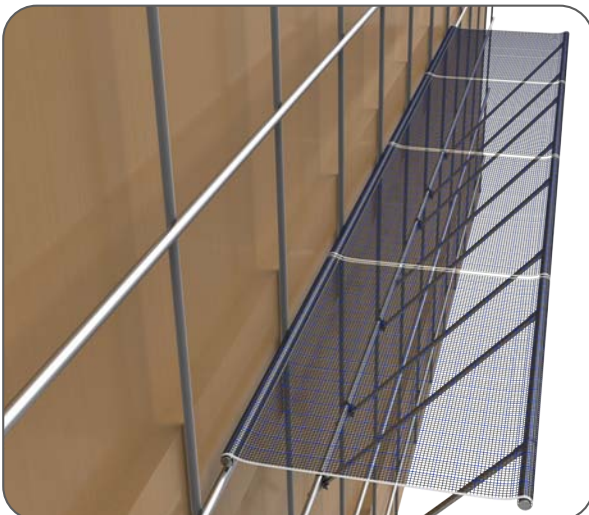
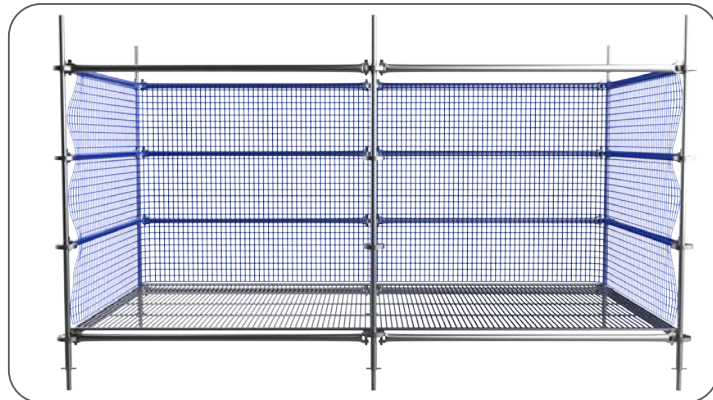
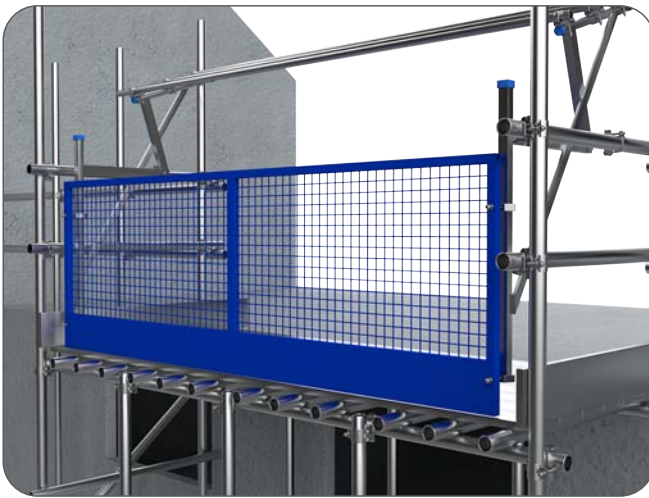


Model No. EPSEPS

The AFFIX Scaffold Edge Protection System is required for safety on platform levels of all types and brands of scaffolding systems at construction site.

Scaffold Edge Protection System comprises:

1. Brick Mesh Guards
2. Safety fan for scaffolding
3. Scaffolding safety mesh



H20 Beam Edge Protection System

Model No. EPFEPS01

AFFIX H20 Beam Edge Protection system is designed to meet the challenges of safe working at height with formwork systems. The H20 beam clamp can securely fix beams and cornices to timber and timber formwork. It locks onto the upper surface of the timber formwork beam which provides sockets or other means of clamping vertical safety posts.

H20 Beam edge protection system comprises:

1. H20 Beam Clamp
2. Safety Post 1.2 m
3. Mesh barrier 1.3 m, 2.6 m



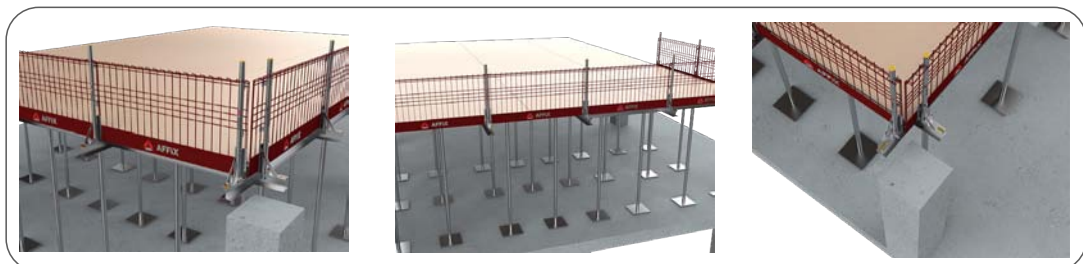
Aluminium Beam Clamp Edge Protection System

Model No. EPFEPS02

The AFFIX adjustable aluminium beam clamp matches with various formwork decking system. The clamps have been designed to fit different sizes of extruded aluminium beam sections. It fits beam sizes from 60mm to 150mm flange width.

Aluminium Beam clamp edge protection system comprises:

1. Aluminium Beam Clamp
2. Safety Post 1.2 m
3. Mesh barrier 1.3 m, 2.6 m



Model No. EPSNF

AFFIX safety net fans are easily customizable that can be used in any structure and they adapt to any shape. The system is perfect for the safe capture of falling objects, person and debris. The resilience of the safety net fans system is such that when the net is impacted, it forms a collection pocket around the trapped object, reducing the impact of the fall and preventing it from falling outside the safety net fans system.

The system is ideal for high-rise buildings and is also suitable for congested downtown areas where space is limited and protecting people and property from potential hazards is critical.

The safety net is manufactured in accordance with **EN-1263 Type T** and uses **60×60 and 20×20** layered nets capable of stopping a **100kg** mass twice in any part of the safety net fans system from a drop height of **7m**.

Safety Net Fan system comprises:

1. Top bracket
2. Bottom bracket
3. Lock bracket
4. Telescopic post
5. Debris Net 3.1 x 6 m
6. Swivel coupler
7. Double Coupler
8. Scaffolding tube 4.5m, 6.0m

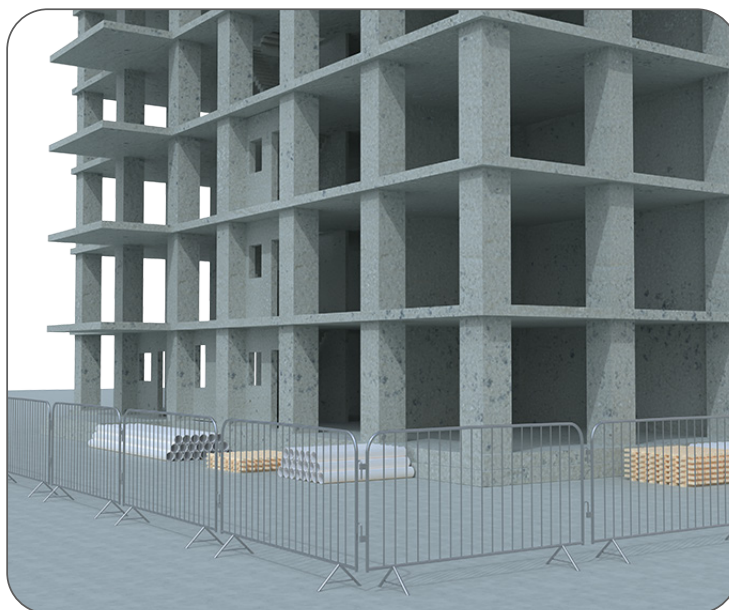


Model No. EPPB

AFFIX Pedestrian Barrier are commonly used at many public places for barricading purpose. They are frequently used at sporting events, parades, political rallies, demonstrations and outdoor festivals. They are basically a temporary fencing system. They are stable and fast-mounted system for blocking and temporary enclosures. They can easily be connected by integrated hooks and loops, and set at different angles. The Pedestrian Barrier is a fixed leg type and the four feet are welded to the frame of the barrier and the legs are splayed, making them easy to stack. This barrier feet has domed ends in order to make sure there are no sharp edges to potentially hurt someone.

Pedestrian Barrier system comprises:

1. Pedestrian barrier 1,8 m, 2,5 m, 3,2 m



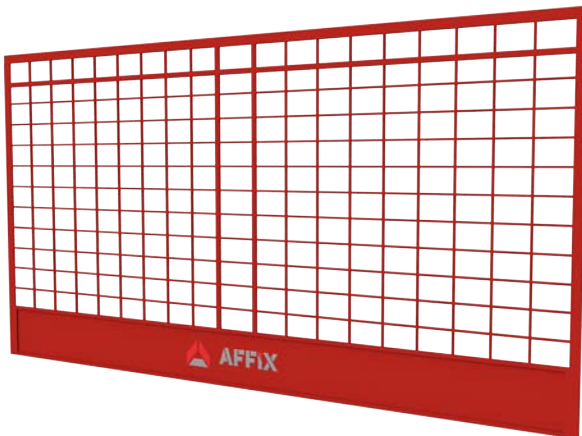
Components of Edge Protection System

Mesh Barrier

Model No. EC01

2.6m long Mesh Barrier

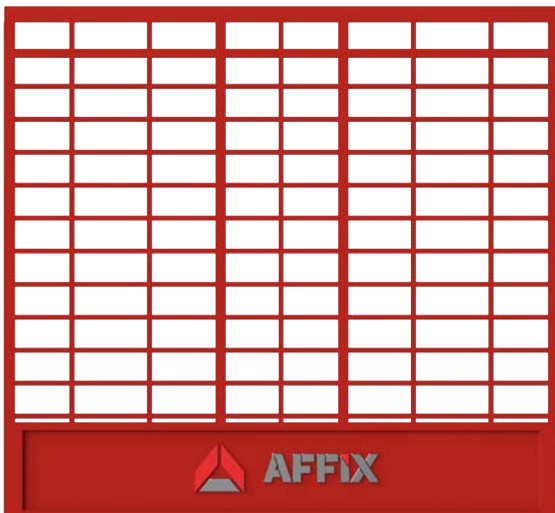
Model No. EC01MB26



Weight	22 kgs
Finish	Powder Coated
Conforms to	EN 13374, class A
Specification	<ul style="list-style-type: none"> • 1.2m high and 2.6m long • 4mm thick mesh • 150 x 75mm grid • 10mm dia center stiffeners • Integrated 225mm high toe board

Mesh Barrier 1.3m long

Model No. EC01MB13

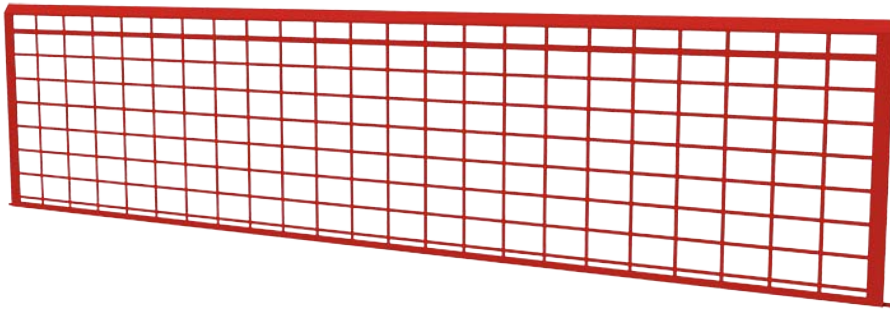


Weight	12 kgs
Finish	Powder Coated
Conforms to	EN 13374, class A
Specification	<ul style="list-style-type: none"> • 1.2m high and 1.3m long • 4mm thick mesh • 150 x 75mm grid • 10mm dia center stiffeners • Integrated 225mm high toe board

2.6m Extension Mesh Barrier

Model No. EC01EMB26

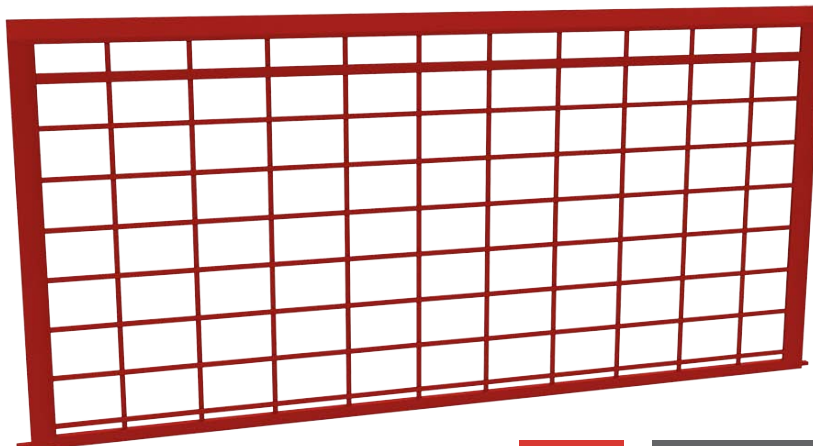
Weight	12 kgs
Finish	Powder Coated
Conforms to	EN 13374, class A
Specification	<ul style="list-style-type: none"> • 0.6m high (can get total height of 1.80m) and 2.6m long • 4mm thick mesh • 150 x 75mm grid



1.3m Extension Mesh Barrier

Model No. EC01EMB13

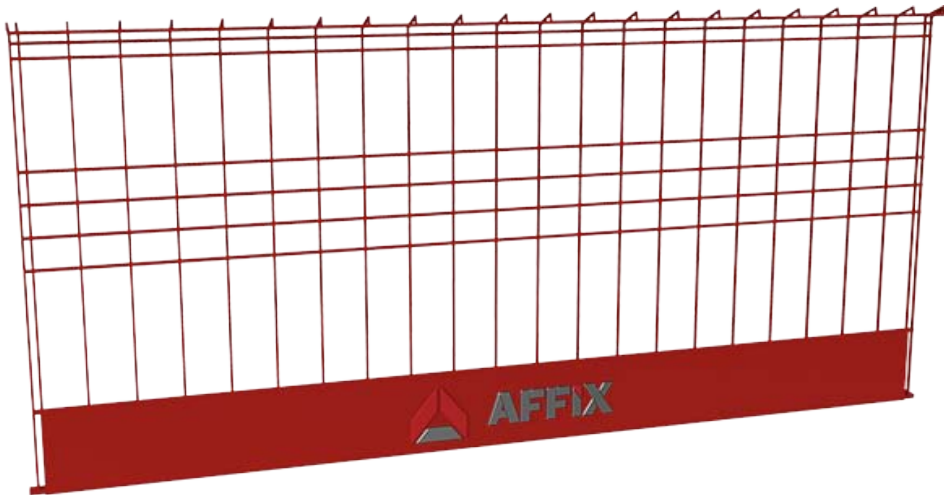
Weight	8 kgs
Finish	Powder Coated
Conforms to	EN 13374, class A
Specification	<ul style="list-style-type: none"> • 0.6m high (can get total height of 1.80m) and 1.3m long • 4mm thick mesh • 150 x 75mm grid



2.6m Mesh Barrier Lightweight

Model No. EC01LMB26

Weight	19 kgs
Finish	Powder Coated
Conforms to	EN 13374, class A
Specification	<ul style="list-style-type: none"> • 1.2m high and 2.6m long • 5mm dia x 6mm dia grid • Integrated 200mm high toe board



1.3m Mesh Barrier Lightweight

Model No. EC01LMB13

Weight	9 kgs
Finish	Powder Coated
Conforms to	EN 13374, class A
Specification	<ul style="list-style-type: none"> • 1.2m high and 1.3m long • 5mm dia x 6mm dia grid • Integrated 200mm high toe board



Foot

Model No. EC02

Socket Base

Model No. EC02SB

This component is generally used for flat surface applications, most commonly at the edge of the slab to act as a socket for holding the safety post.



Weight	1.7kg
Finish	Hot-dip Galvanized
Conforms to	EN 13374, class A

Foot Clamp

Model No. EC02FC

This component is generally used for flat surface applications, most commonly at the edge of the slab to act as a socket for holding the safety post. This component is used when the mesh is to be installed flushed with the slab edge.



Weight	2 kg
Finish	Hot-dip Galvanized or Powder Coated
Conforms to	EN 13374, class A

Walkway Baseplate

Model No. EC02WB

This component is used with walkways barriers to hold them in upright position. This also serves as a counterweight, no need to drill holes to hold them to the ground. Depending upon the site position and requirements, the barrier can be installed into any of the 3 pre-drilled positions.

Weight	11 kg
Finish	Powder Coated
Conforms to	EN 13374, class A



Post

Model No. EC02

Safety post

Model No. EC03SP

This is the most common components across all the AFFIX edge protection mesh barriers. This is available in 1.2m height and it is integrated with two latch pins for locking the mesh barrier in position.



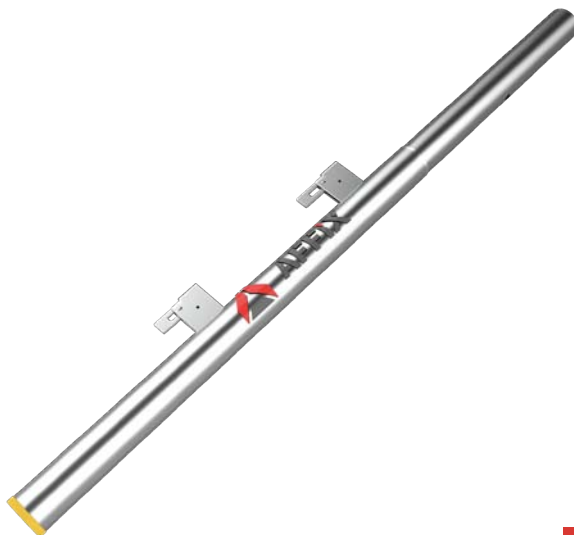
Diameter	48 mm
Height	1.2 m
Weight	5.0kg
Finish	Hot-dip Galvanized
Conforms to	EN 13374, class A

Safety Extension Post

Model No. EC03SEP

This product is used with the standard safety post where the barrier height is required to be more than 1.2 m. This component is fixed to the 1.2m standard post to extend the total height to 1.8m.

This is an excellent solution for erecting barrier systems on concrete slab edges for



Weight	3.5 kg
Finish	Hot-dip Galvanized
Conforms to	EN 13374, class A

Compression Post

Model No. EC03CP

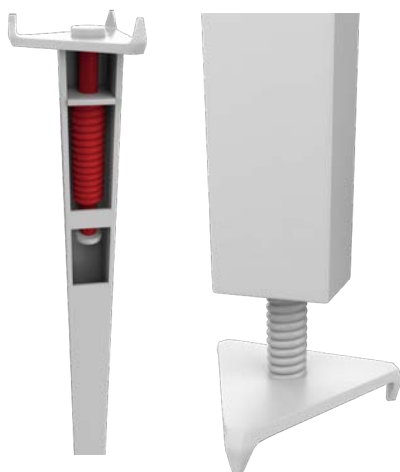
This component is an edge protection post for installation from the floor to ceiling height fully covering the slab edge openings. The compression post is available up-to a floor height of 3.5m. Compression posts can be easily installed by extending the inner tube to the ceiling and then activating the compression function via the screw jack at the bottom.



Weight	12 kg
Finish	Hot-dip Galvanized or Powder Coating
Closed Height	2.4m
Max Extended Height	3.5m
Conforms to	EN 13374, class A



Slide the adjustment handle down or up to lock and unlock the post

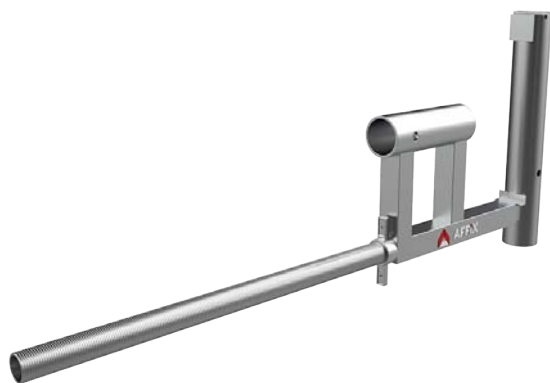


The top device has a spring system. The bottom has the 25mm (1") adjust distance fully threaded screw

Slab Clamp

Model No. EC04

This component can be used both horizontally and vertically, on a slab edge or upstanding wall. The clamp is adjustable and can be clamped on slab thickness ranging between 30mm – 450mm.



Weight	9 kg
Finish	Zinc Plated Surface
Fit for	Slab thickness 30mm – 450mm
Conforms to	EN 13374, class A

Slab Edge Bracket

Model No. EC05

This component can be mounted on concrete floor to provide protection at the slab edge. The slab edge bracket is held stable by nailing to the concrete. The socket tube has a diameter of 57 mm and allows insertion of 1.3m height safety posts.

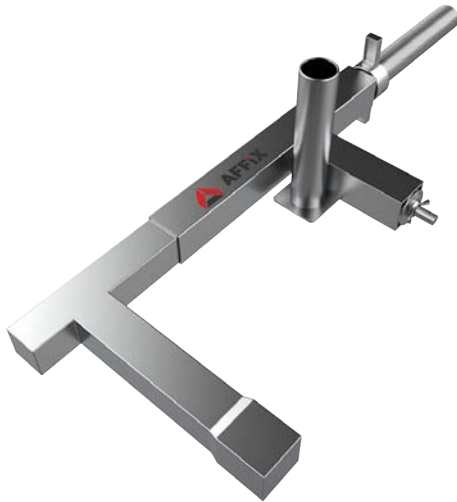


Weight	2.5 kg
Finish	Hot-Dip Galvanized
Conforms to	EN 13374, class A

Stair Clamp

Model No. EC06

This component eliminates the need of drilling and fixing stair edge protection on staircases. This can be easily clamped to the staircase, safety post fitted and handrail



Weight	8.5 kg
Finish	Zinc Plated Surface
Conforms to	EN 13374, class A

Adjustable Steel I-Beam Clamp

Model No. EC07

This is one of the most versatile and advanced component of Edge protection system for steel structure. The clamps are integrated into brackets that will hold the safety posts. The I-Beam clamp is horizontally & vertically adjustable, suiting steel beams to a flange width range of 100mm to 310mm and a maximum beam height of 990mm.



Weight	8.5 kg
Finish	Hot-dip Galvanized
Conforms to	EN 13374, class A

Adjustable Bolt and Slotted Bracket

Model No. EC08

This component can be directly bolted to the I-beam web into pre-drilled holes. The sliding socket to hold the safety post is integrated into the I-beam bracket. This component is horizontally and vertically adjustable to accommodate various site conditions and requirements.



Weight	9.0 kg
Finish	Hot-dip Galvanized
Conforms to	EN 13374, class A

Wedge Coupler

Model No. EC09

This component is used with safety posts or scaffolding tubes for attaching mesh barriers or handrail bars.



Weight	0.8 kg
Finish	Hot-Dip Galvanized
Conforms to	EN 13374, class A

Adjustable Aluminium Beam Clamp

Model No. EC10

This adjustable aluminum beam clamp is compatible with a wide range of formwork platform systems and is suitable for beam sizes from 60 mm to 150 mm. For higher safety during high wind loadings, this system is integrated with wingnut locking mechanism.



Weight	3 kg
Finish	Hot-dip Galvanized
Conforms to	EN 13374, class A

H20 Beam Clamp

Model No. EC11

This component is used to install edge protection on a 40 mm H20 beam. Compatible with European most timber beam sections.



Weight	4.0 kg
Finish	Hot-dip Galvanized
Conforms to	EN 13374, class A

Barrier Bracket 360

Model No. EC12

Barrier bracket 360 is used in corners to eliminate double attachments or posts.



Weight	0.5 kg
Finish	Zinc Plated Surface
Conforms to	EN 13374, class A

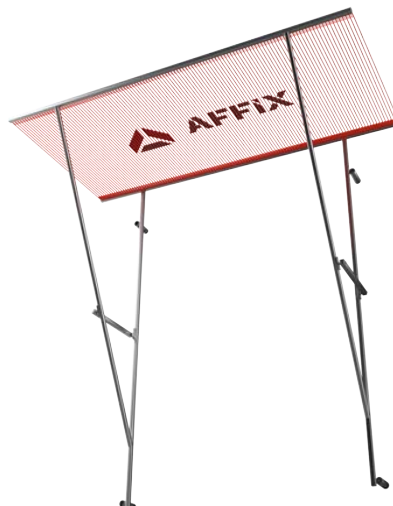
Safety Net Fan Components

Model No. EC13

Safety Net Fan Assembly

Model No. EC13SNFA

The AFFIX safety net fan is a slab edge protection system for building construction which helps prevent or limit the fall of people and materials from height.



Top Bracket

Model No. EC13TB

Used for attaching Safety fans on floor structures.



Telescopic Post

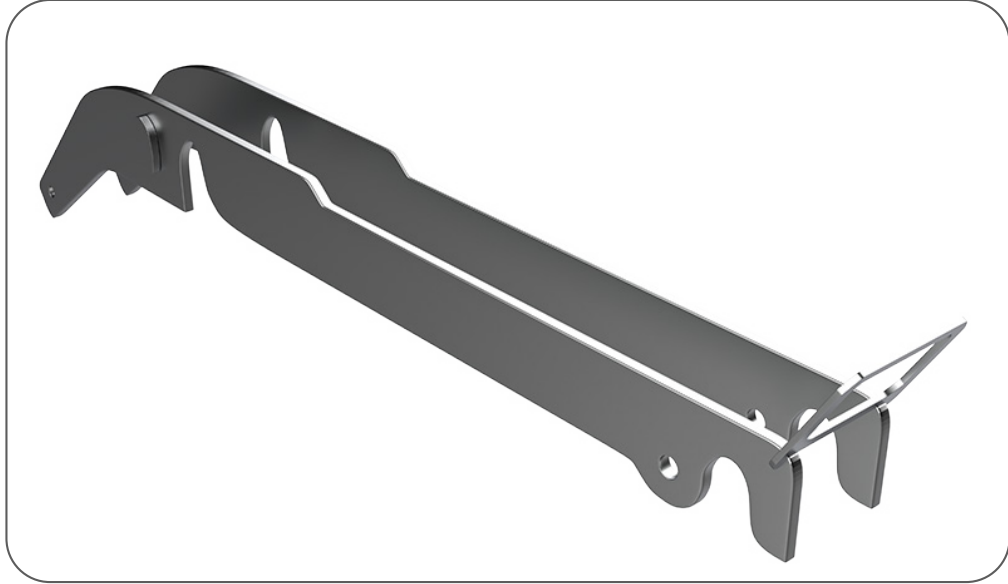
Model No. EC13TP

Used for adjusting height of the floor structures.



Lock Brace **Model No. EC13LB**

Used for locking the safety net fan on position.



Bottom Bracket **Model No. EC13BB**

Used for attaching Safety fans on floor structures.

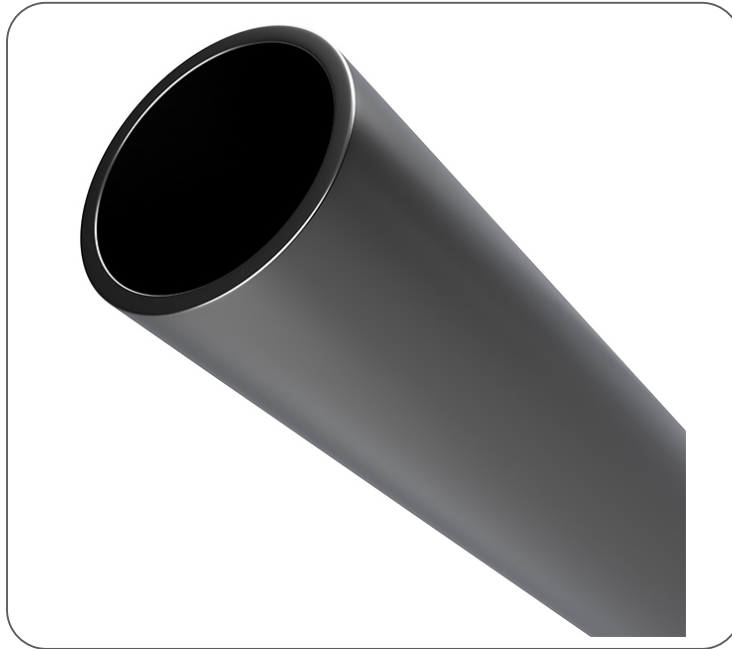


Scaffold Tube Horizontal 4m/6m

Model No. FCA01

Used for attaching Debris Net.

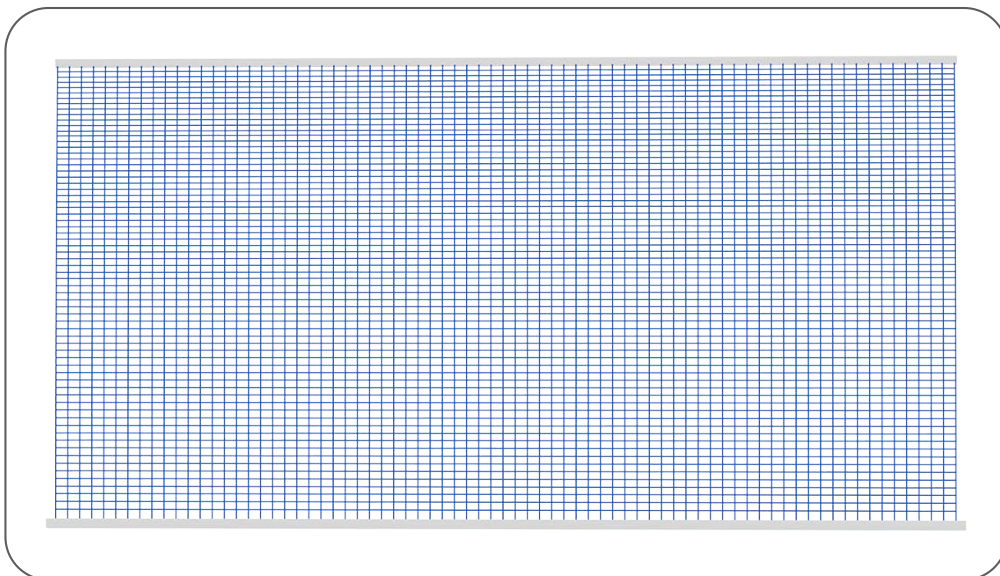
Scaffold Tube Brace 4.5m



Debris Net

Model No. EC13DN

Prevent or limit the fall of people and materials from height.



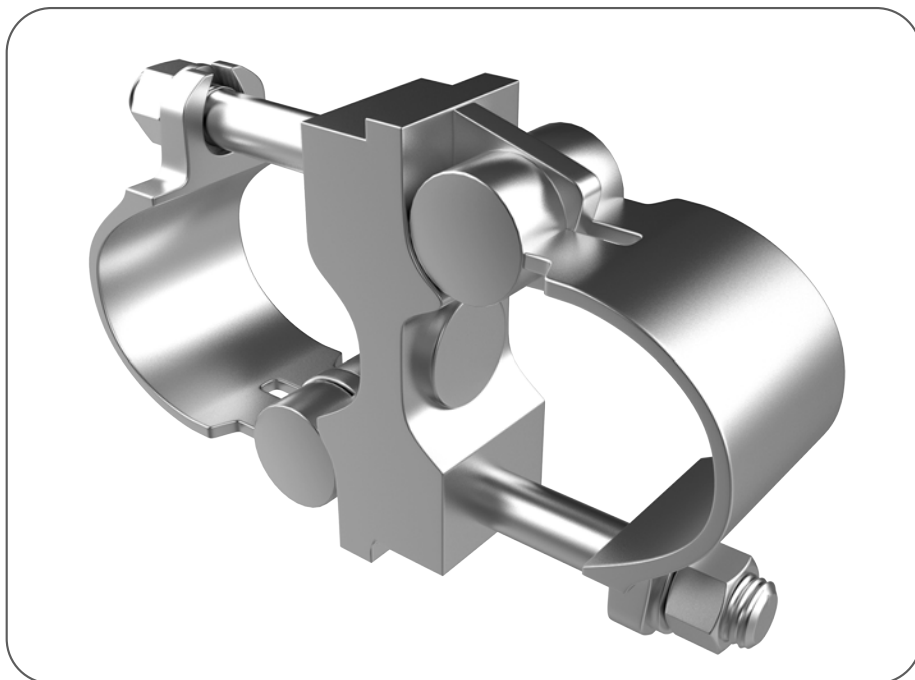
Right Angle Coupler

Model No. FCF08



Swivel Coupler

Model No. FCF09



COMPLIANCE

At **AFFIX**, our certified Quality Management System guarantees products are consistently rated higher in performance and value by the industry. This has been possible only because of our stringent quality control procedures. This assures our customers that our products have been inspected and/or tested to comply with strict **EN standards** for different products.

AFFIX is **EN 1004-1:2020** certified for its **Mobile Scaffolding** range of products. This Quality standard defines what materials, dimensions, design loads, safety and performance requirements mobile access towers should confirm to.



AFFIX is **BS 1139-6:2014** certified for its **Cantilever, Bridgeway and Stair Tower** range of products. This Quality standard specifies requirements for the structural design of prefabricated tower scaffolds utilizing components from mobile access and working towers

COMPLIANCE

AFFIX is **EN 131** certified for its **Portable Steps and Ladders** range of products. This Quality standard is a European committee for standardisation (CEN) harmonised standard for portable steps and ladders, manufactured from metal and certain other materials such as GRP.



AFFIX is **EN 74** certified for its **Couplers** range of products. This Quality standard applies to scaffolding couplers only. It is used mostly for Double couplers, Swivel couplers and Sleeve couplers. This standard defines the requirement on Slip, Distortion and Other Characters to ensure safety of the product.

COMPLIANCE

AFFIX is **BS 8620:2016** certified for its **Podium Steps** range of products. This Quality standard specifies requirements for an Low Level Work Platform with one working platform with side protection, for use by one person, with a maximum working platform height not greater than 2.5 m. The maximum working load of the LLWP is 150 kg.



AFFIX is **EN 12810-1:2003** and **EN 12811-1:2003** certified for its **Cup-lock Scaffolding Components** range of products. These Quality standards specifies the performance requirements, the general requirements for the structural design and assessment of prefabricated facade scaffold system and the methods of structural and general design for access and working scaffolds.

COMPLIANCE

AFFIX is a **Manufacturing Member of PASMA** and the. This association is the recognised body and authority for mobile access towers. PASMA advances safety, standards and best practices across a wide range of sectors and represents the interests of its members in the UK, South Africa, South East Asia and the Middle East. We feel privileged to be associated with PASMA and helping them to advance safety and standards in the mobile access tower industry

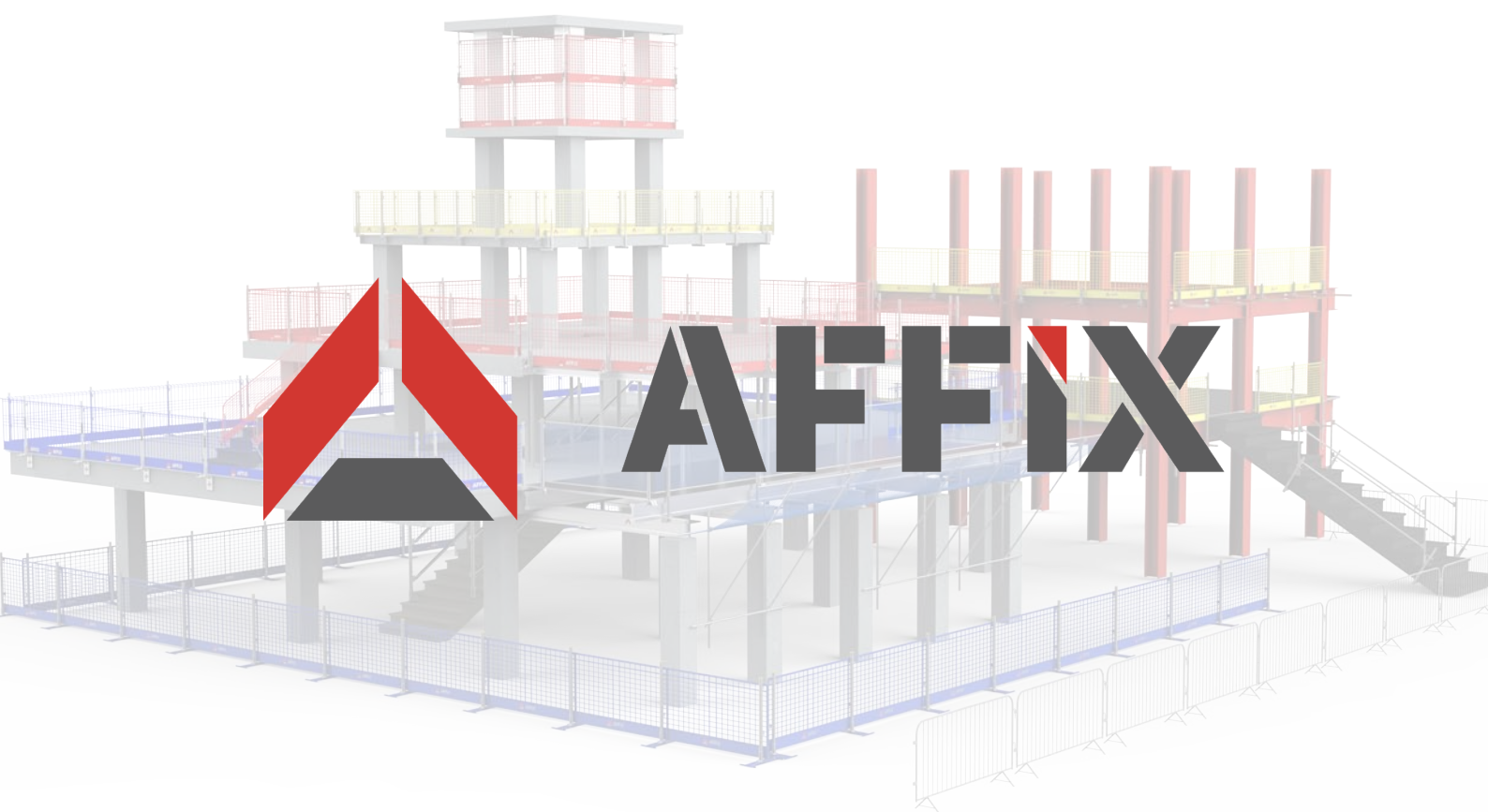


AFFIX is also a **Manufacturing Member of The Ladder Association** and the member category is "Manufacturer; Supplier". We feel privileged to be associated with The Ladder Association and helping to progress safety and best practice step by step. As a member of the association, AFFIX is not only supposed to demonstrate compliance with ladder safety standards but we are also expected to provide inputs into the creation of those standards.



AFFIX is **ISO 9001:2015** certified. These quality management standards, maintained by the International Organization of Standardization(ISO), provides a number of business process requirements for consistent product manufacturing and delivery to meet customer's expectations.







AFFIX

PO Box No. 201633 Doha, Qatar
Tel +974 4416 1483
Mobile +974 3030 0685
Mobile +974 5529 9893
Email info@affixscaffolding.com
Website www.affixscaffolding.com

Facebook facebook.com/affixscaffolding
Twitter twitter.com/affixscaffolding
Linkedin linkedin.com/company/affix-scaffolding-llc/

Website

