



# Rail Maintenance Platforms



**AFFIX**







## COMPANY PROFILE

**AFFIX** is one of the market leaders in Work-At-Height solutions and Access Systems since 2005. We are based out of **Qatar, UAE and India**. Our state of art, technologically advanced production facility is equipped with latest Robotic welding machines and production machinery. We have our own Innovation and R&D team set-up in Qatar

We are privileged to be a **Manufacturing Member of PASMA, UK** and also a **Manufacturing Member of The Ladder Association, UK**.

We are manufacturers and suppliers of various work at height solutions which are TUV certified and access systems like Aluminium and Steel Scaffoldings, Cuplock System, Shoring System, Fall Protection System, Ladders, Working Platforms, Bespoke products like Aviation, Rail and Commercial Vehicle's maintenance docks and platforms.

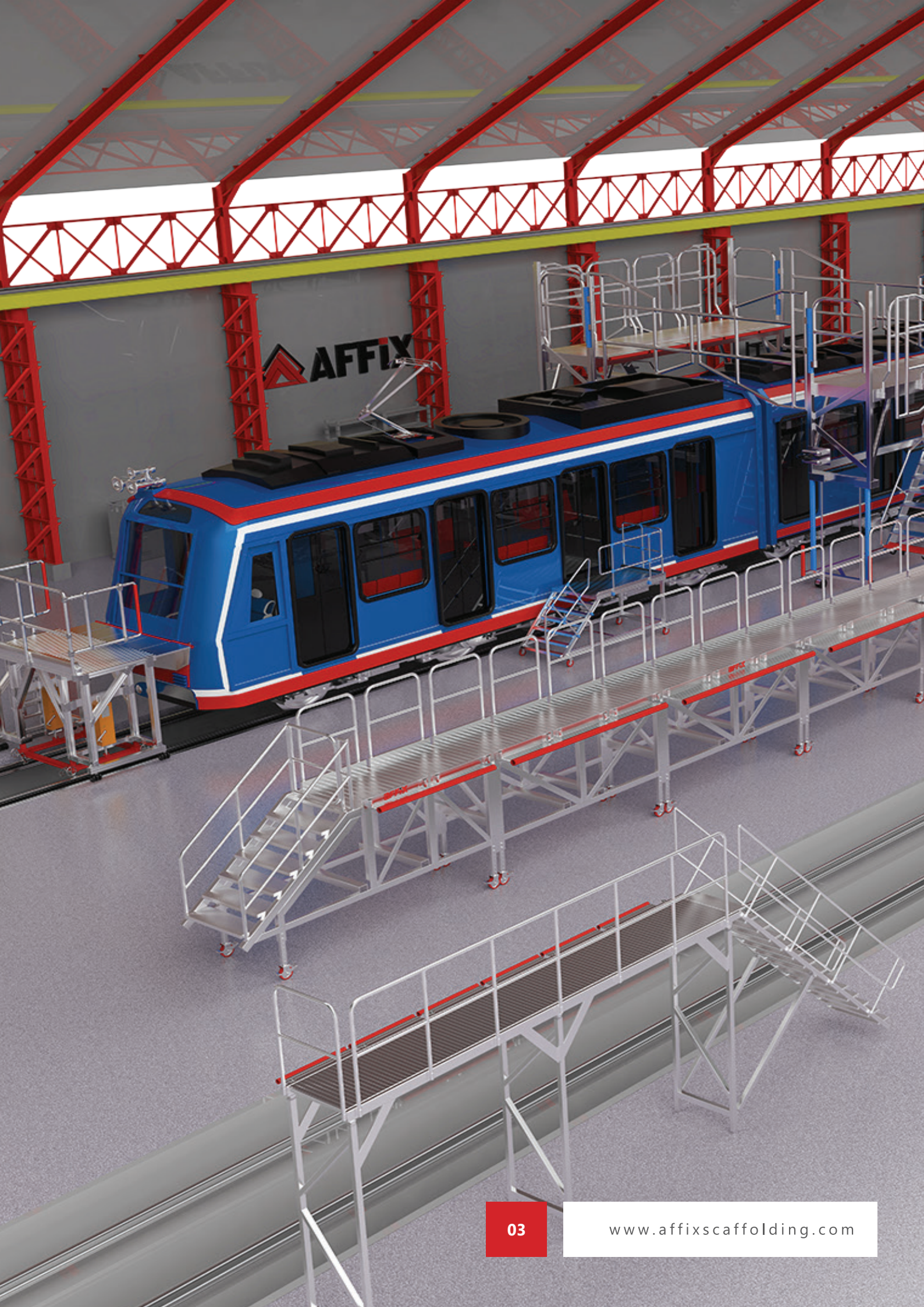
### **Safety is our prime concern.**

All our products are **duly Certified by TUV** or other global Certification bodies for their required corresponding European/ International Standards.









**AFFIX**





# Rail Maintenance Access System





 **AFFIX**





# Specifications and Technical Data

# Front Rail Access Platform

## Model No.SAA0421

Affix Front Access Platform for the Rail is designed in such a way that it can be used across Metro Rail, High Speed Rail, Subway and Trams for easy and safe access to the Windscreen or Vestibule Doors to undertake maintenance or inspection job. This structure comes with adjustable height.

The structure is fabricated out of high-quality heavy duty extruded **Aluminium alloys** with natural finish.

### Features:

- The structure is flexible enough to bridge any gaps between the structure and the vehicle to protect from any accidents during working.
- Simple Rack and Pinion gear system used for adjusting the height.
- This extra heavy-duty chassis holds the track wheels for easy positioning in front of the train.
- The clamps on the chassis ensures locking of the safety lock with the track into position.
- The front of the platform is open. The back side has a fixed guardrail. Swing/retractable doors on the left and right side.
- Easy and safe access from the sides using step ladder whose position can be changed from left to right or vice versa.
- Anti-skid platform and ladder treads for added safety.
- Adjustable sliding fingers in the platform on the front side to adapt to the shape of the train front. These are further fitted with front-edge soft padding to safeguard the train from any accidental impact.





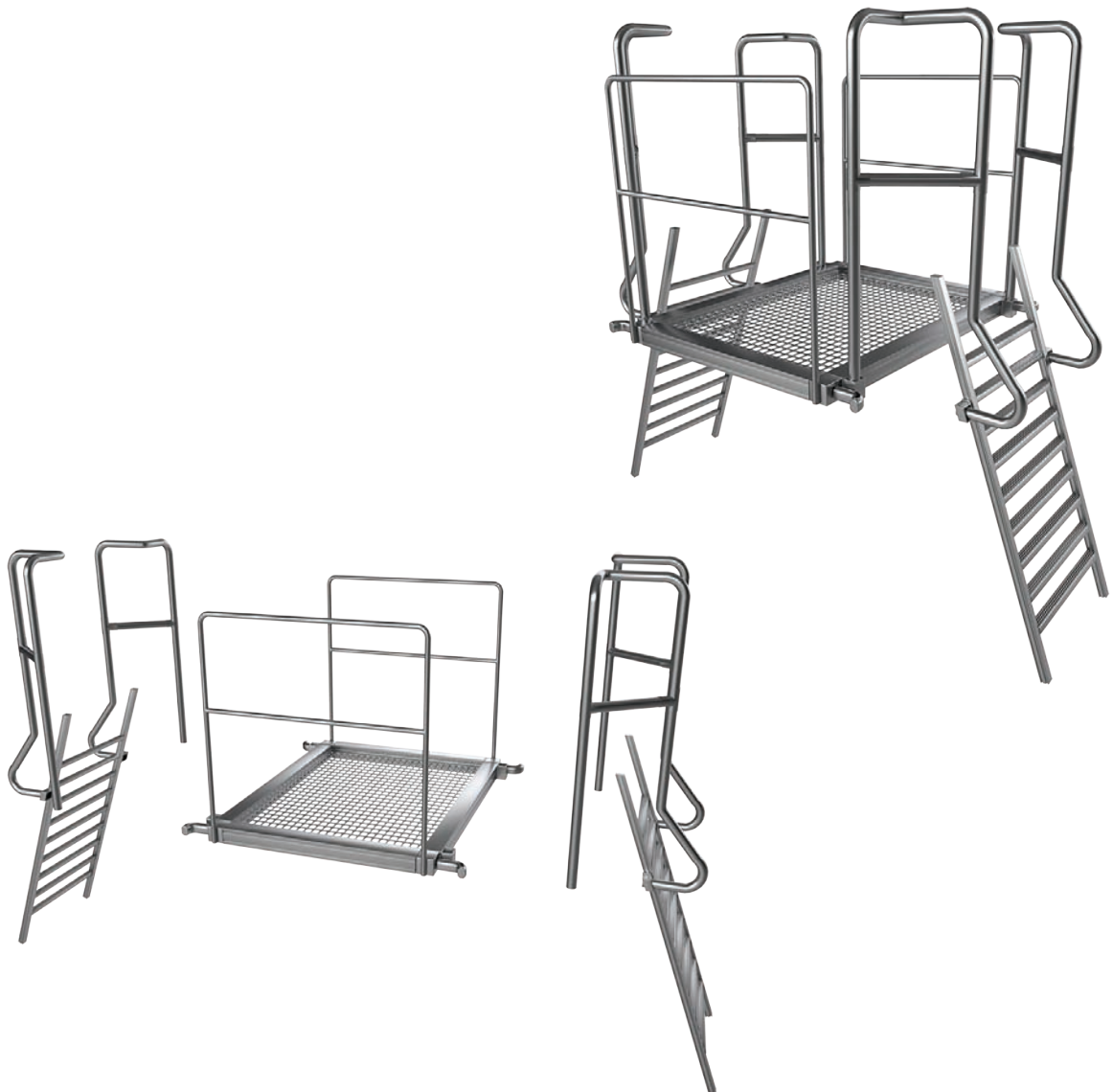
## Pit Access Rail Platform Steps

**Model No.SAA0422**

Affix Pit Access Rail Platform Steps is designed in such a way that it can be used across Metro Rail, High Speed Rail, Subway and Trams for easy and safe access to the Windscreen or Vestibule Doors to undertake maintenance or inspection job. This structure is used to access the front nose of the rail from the pit.

### Features:

- The structure is fabricated out of high-quality heavy duty extruded Aluminium alloys with natural finish.
- This is used when there's a pit underneath the rail in maintenance depots. This provides pit access and pit to working platform access.
- The working platform bridges the gap between the two sides of the rail maintenance platform.
- The left and right side of the working platform is open for easy access to and from the rail platform.
- It's a modular structure which means the pit platform is detachable from the ladder steps which can be used separately for over the pit access.





# Roof Working Platform (Mobile)

Model No.SAA0221

Affix multi utility Roof Working Platform is designed in such a way that it can be used across Metro Rail, High Speed Rail, Subway and Trams to access the roof for maintenance work. The structure is fabricated out of high-quality heavy duty extruded **aluminium alloys** with natural finish.

## Features:

- The structure is flexible enough to bridge any gaps between the structure and the vehicle to protect from any accidents during working.
- The adjustable height mechanism gives the flexibility to achieve the desired working height depending upon the vehicle.
- The platform sides are fitted with side-edge soft padding to safeguard the train from any accidental impact.
- Heavy duty castor wheels provided with dual brakes for easy movement and spindles for high stability.
- Three different modes of access steps are provided:
  1. Default is located directly beneath the platform with a trapdoor.
  2. On the side of the platform (consumes additional space).
  3. Fixed ladders (with square, round or D rungs).
- Handrails can also be supplied as detachable handrails (on special request).





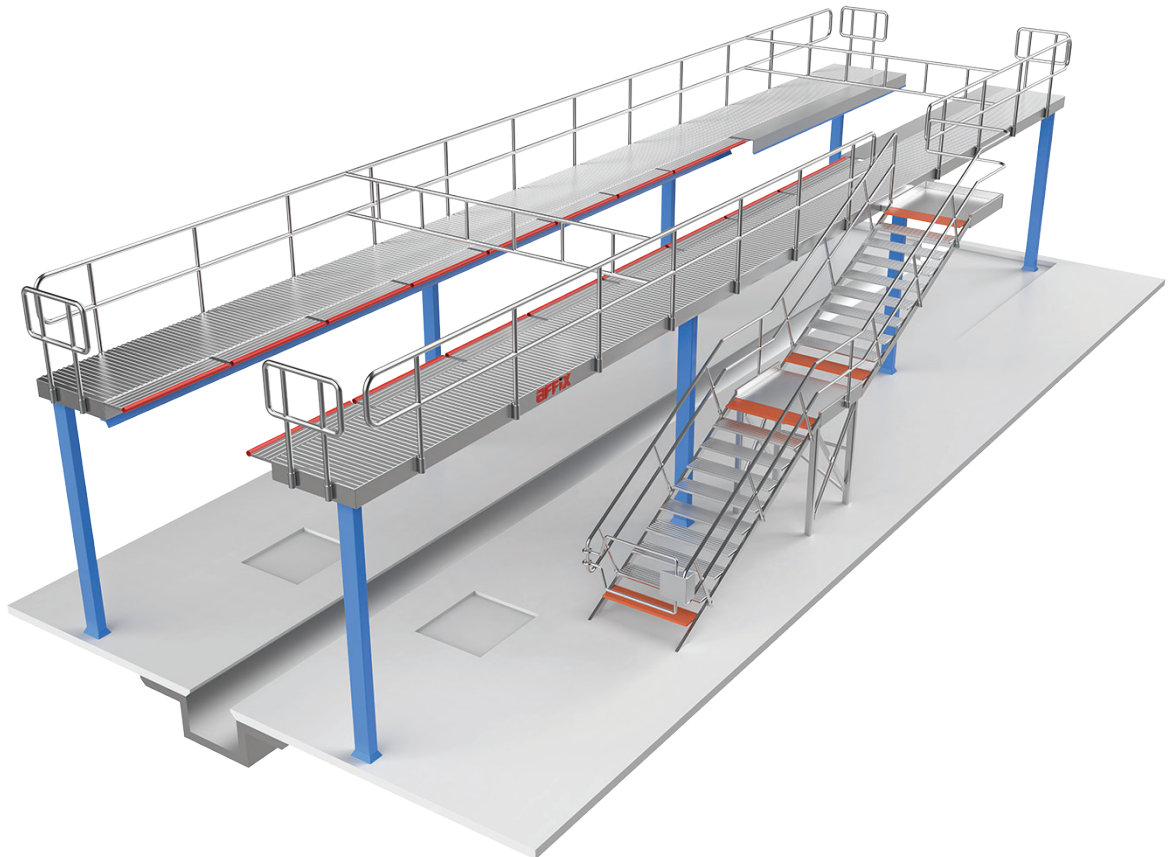
## Roof Working Platform (Fixed)

Model No.SAA0222

Affix multi utility Roof Working Platform is designed in such a way that it can be used across Metro Rail, High Speed Rail, Subway and Trams for access to the roof of one full coach for maintenance work. The structure is fabricated out of high-quality heavy duty extruded **aluminium alloys** with natural finish.

### Features:

- The structure is flexible enough to bridge any gaps between the structure and the vehicle to protect from any accidents during working.
- The platform sides are fitted with side-edge soft padding to safeguard the train from any accidental impact.
- Available in two options – Fixed Height and Adjustable Height. The adjustable height mechanism gives the flexibility to achieve the desired working height depending upon the vehicle.
- Two different modes of access steps are provided:
  1. Default is located on the side of the platform
  2. Fixed ladders (with square, round or D rungs)
- Handrails can also be supplied as detachable handrails (on special request).





# Side Access Rail Platform

## Model No.SAA0423

Affix Side Access Rail Platform is ideal to be used across Metro Rail, High Speed Rail, Subway and Trams for easy and safe access for inspection or maintenance jobs.

### Features:

- The structure is fabricated out of high-quality heavy duty extruded Aluminium alloys with natural finish.
- This product is designed for internal or external use inside the train maintenance depot.
- The platform sides are fitted with side-edge soft padding to safeguard the train from any accidental impact.
- The light weight structure provides ease of use, controlled manoeuvrability and positioning inside the train depot.
- Anti-skid platform and ladder treads for added safety.
- Detachable handrails and guard-rails which gives flexibility for the platform to be used from any side.





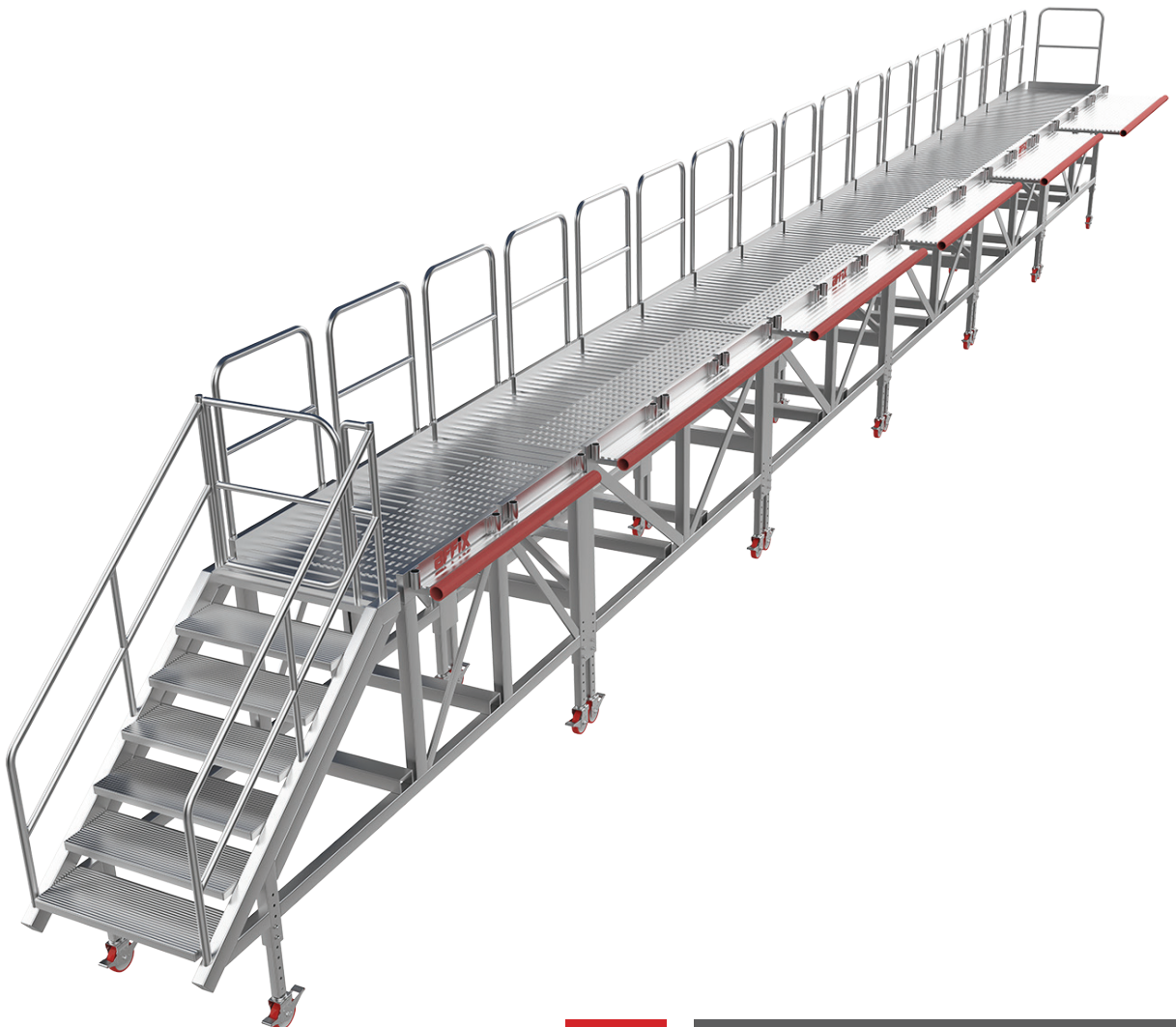
## Cleaning/De-Icing Platform

### Model No.SAA0223

Affix provides another variant for working on the sides or even the roof of the rail coaches. This working platform is developed to be used in the Ice removal, cleaning of dust or removing water etc from the roof of Metro Rail, High Speed Rail, Subway and Trams coaches. This working platform can also be used for working on the sides like cleaning the sides or windows etc. They are light, robust and easy to use while offering the highest level of safety.

#### Features:

- Mobile and Fixed variant available for Rails. Mobile variant uses heavy duty castor wheels with double brake system for added safety.
- The structure comes with adjustable height for easy access to sides or even roof tops.
- The system is modular. Base model is 3 Mtr long and it can be extended till 24 Mtr to cover one full coach.
- The system comes with detachable handrails (Optional on request).
- The sides are fitted with side-edge soft padding to safeguard the train from any accidental impact.





# Mobile Platform Stairs/ Stepladder

## Model No.SAA0124

This mobile maintenance working platform is developed to be used in the maintenance and production of rail coaches. They are light, robust and easy to use while offering the highest level of safety. This can be very easily and smoothly operated by a single user due to it's light weight structure. This mobile work platform is easy to manoeuvre and best suitable where you need to frequently change working positions.

### Features:

- Available steps width 600mm and 800mm.
- Available platform width:
  1. 600mm x 800mm
  2. 800mm x 800mm
- Available Platform heights is 850mm – 2100mm.
- A wide platform area ensures a full 360° work space.
- Serrated anti-skid steps and platform surface.
- Optional barrier or swing door for guard rail.
- Removable modular guardrails and handrails.





# COMPLIANCE

At **AFFIX**, our certified Quality Management System guarantees products are consistently rated higher in performance and value by the industry. This has been possible only because of our stringent quality control procedures. This assures our customers that our products have been inspected and/or tested to comply with strict **EN standards** for different products.

**AFFIX** is **EN 1004-1:2020** certified for its **Mobile Scaffolding** range of products. This Quality standard defines what materials, dimensions, design loads, safety and performance requirements mobile access towers should confirm to.



**AFFIX** is **BS 1139-6:2014** certified for its **Cantilever, Bridgeway and Stair Tower** range of products. This Quality standard specifies requirements for the structural design of prefabricated tower scaffolds utilizing components from mobile access and working towers



# COMPLIANCE

**AFFIX** is **EN 131** certified for its **Portable Steps and Ladders** range of products. This Quality standard is a European committee for standardisation (CEN) harmonised standard for portable steps and ladders, manufactured from metal and certain other materials such as GRP.



**AFFIX** is **EN 74** certified for its **Couplers** range of products. This Quality standard applies to scaffolding couplers only. It is used mostly for Double couplers, Swivel couplers and Sleeve couplers. This standard defines the requirement on Slip, Distortion and Other Characters to ensure safety of the product.

# COMPLIANCE

AFFIX is **BS 8620:2016** certified for its **Podium Steps** range of products. This Quality standard specifies requirements for an Low Level Work Platform with one working platform with side protection, for use by one person, with a maximum working platform height not greater than 2.5 m. The maximum working load of the LLWP is 150 kg.



AFFIX is **EN 12810-1:2003** and **EN 12811-1:2003** certified for its **Cup-lock Scaffolding Components** range of products. These Quality standards specifies the performance requirements, the general requirements for the structural design and assessment of prefabricated facade scaffold system and the methods of structural and general design for access and working scaffolds.



# COMPLIANCE

**AFFIX** is a **Manufacturing Member of PASMA** and the. This association is the recognised body and authority for mobile access towers. PASMA advances safety, standards and best practices across a wide range of sectors and represents the interests of its members in the UK, South Africa, South East Asia and the Middle East. We feel privileged to be associated with PASMA and helping them to advance safety and standards in the mobile access tower industry



**AFFIX** is also a **Manufacturing Member of The Ladder Association** and the member category is "Manufacturer; Supplier". We feel privileged to be associated with The Ladder Association and helping to progress safety and best practice step by step. As a member of the association, AFFIX is not only supposed to demonstrate compliance with ladder safety standards but we are also expected to provide inputs into the creation of those standards.



**AFFIX** is **ISO 9001:2015** certified. These quality management standards, maintained by the International Organization of Standardization(ISO), provides a number of business process requirements for consistent product manufacturing and delivery to meet customer's expectations.





**AFFIX**





# AFFIX

**PO Box No.** 201633 Doha, Qatar  
**Tel** +974 4416 1483  
**Mobile** +974 3030 0685  
**Mobile** +974 5529 9893  
**Email** [info@affixscaffolding.com](mailto:info@affixscaffolding.com)  
**Website** [www.affixscaffolding.com](http://www.affixscaffolding.com)

**Facebook** [facebook.com/affixscaffolding](https://facebook.com/affixscaffolding)  
**Twitter** [twitter.com/affixscaffolding](https://twitter.com/affixscaffolding)  
**Linkedin** [linkedin.com/company/affix-scaffolding-llc/](https://linkedin.com/company/affix-scaffolding-llc/)

Website

